

GP[®] TITAN TAPE

Rev: June 2019



Ground Gas Protection

JUTA GP[®] TITAN TAPE - is an extruded butyl tape designed for jointing JUTA GP[®] TITANTECH Barriers and Structural waterproofing barriers. The tape is double sided, with release film on both sides to assist with ease of installation. GP[®] TITAN TAPE is designed to prevent the passage of water, water vapour, air and gas, for use in building construction with waterproof membranes, vapour control layers and ground gas barriers.

JUTA GP[®] TITAN TAPE has excellent adhesion to all JUTA Membranes, and a wide range of substrates. The flexible composition of the GP[®] TITAN TAPE makes it highly conformable to irregular surfaces, and it is easy and accurate to use with little to no waste. JUTA GP[®] TITAN TAPE has unrivalled levels of adhesion and is designed to remain flexible throughout the service life.



JUTA GP [®] TITAN TAPE			
Characteristic	Test Method	Unit	GP [®] TITAN TAPE
Physical Properties			
Thickness	EN 1849-2	mm	1.5
Width	EN 1849-2	mm	100
Length	EN 1849-2	M	15
Packaging	4 rolls/Box (50 Boxes/pallet)		
Colour	Black		
Mechanical Properties			
Dynamic Tensile Adhesion	Modified PSTC	N/cm ²	19
Dynamic Shear Adhesion	Modified PSTC	N/cm ²	13
T-Peel Adhesion to PE membrane	Modified PSTC	N/cm	12
Specific Gravity	EN ISO 10563	g/cm ³	1.6
Moisture Vapour Transmission Rate	EN ISO 15106	g/m ² /24hr/mm	0.16
Water tightness (200kPa) PE membrane joint	EN 1928 (mod)	-	PASS
Service Temperature Range	-	°C	-40 to +90
Radon Transmittance	SP 3873	m/s	1.7 x 10 ⁻⁸

APPLICATION

Application temperature range is +5 to +40 °C. JUTA GP[®] TITAN TAPE has a shelf life of approximately 24 months when stored flat in original packaging in cool, dry conditions.

Prior to application, all surfaces should be clean, dry, and free from frost, grease and loose detritus materials. Apply direct from the reel onto the surface and press along the whole application length to achieve optimal adhesion. Remove the backing paper and offer the opposite surface to the GP TITAN TAPE and press firmly to seal the joint. JUTA recommends the use of a silicon roller for optimal pressure application to taped joints.

COMPATABILITY

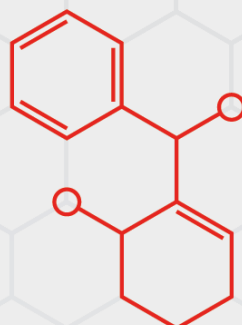
JUTA GP[®] TITAN TAPE is compatible with our full range of Waterproof and Gas barriers, including:

- JUTA GP[®]1
- JUTA GP[®]2
- JUTA GP[®]H
- JUTA GP[®] TITANFLEX
- JUTA GP[®] TOP HATS AND PREFORMED CORNERS

ADDITIONAL INFORMATION

For additional information or assistance, please contact JUTA UK directly.

Contact us to find out more information.
info@juta.co.uk | 01772 754177 | JUTA.CO.UK
Melton Grove Works, Church Road, Lytham, FY8 5PL



JUTA



riba
product
selector