

GP[®] VOID VENT

Rev: June 2019

Ground Gas Protection

JUTA GP[®] Void Vent is a cusped HDPE core with a geotextile filter/separator bonded to a single side, in either 25mm or 40mm depth. The intended use of the Void Vent is to provide a means of ventilation when used in conjunction with an approved Gas Protection Barrier, in accordance with the recommendation(s) contained within NHBC Guidance and BS8485:2015 + A1 2019.

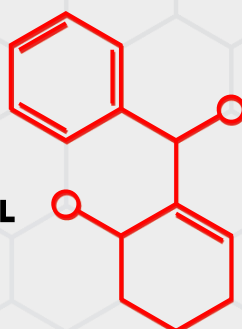
Optimised for maximum strength and performance, providing high levels of air/gas flow. Complies with the latest codes of practice as published by BRE, CIRIA and NHBC. Void Vent is independently tested and verified by UKAS accredited bodies.

Mean Value (applied tolerance*)				
	Test Method	Unit	Void Vent 25	Void Vent 40
Mechanical Properties				
CBR Puncture Resistance	EN ISO 12236	kN	1.4 (-0.14)	1.4 (-0.14)
Tensile Strength (MD/CMD)	EN ISO 10319	kN/m	20/15 (-2.0/-1.5)	10/10 (-1.0/-1.0)
Compressive Strength	EN ISO 25619-2	kPa	300	200
Hydraulic Properties				
Pore Size (O ₉₀) [geotextile]	EN ISO 12956	µm	80 (±20)	80 (±20)
Permeability (H ₅₀) [geotextile]	EN ISO 11058	l/m ² /s	100 (-20)	100 (-20)
Water Flow Capacity [Composite] (200kPa, (i) =1)	EN ISO 12958	l/m/s	5	>5
Gas Flow Capacity [Composite]	calculated ^(a)	m ³ /s	0.024	0.033
Physical Properties (nominal)				
Thickness	EN ISO 9863-1	mm	27.00	42.00
Material Dimensions				
Roll Width		m	0.9	0.97
Roll Length		m	50	25
Gross roll weight		kg	60	50
Product Information				
Polymer	High Density Polyethylene			
Biological Resistance	HDPE does not support bacterial growth			
Chemical Resistance	HDPE is highly resistant to acids and alkalis			

Values are Typical, with the exception of Thickness, which is Nominal. Typical indicates the mean value derived from the samples taken for any one test as defined in the BS EN ISO standard - usually the mean of five samples. Nominal is a guide value.

^(a) Gas Flow Calculated based on a discharge coefficient of 0.61 with a pressure difference of 10Pa and a standard air density of 1.29kg/m³.

Contact us to find out more information.
info@juta.co.uk | 01772 754177 | JUTA.CO.UK
 Melton Grove Works, Church Road, Lytham, FY8 5PL



riba
product selector

JUTA

Additional Information

INSTALLATION

Refer to specific Void Vent installation guidance. Detailed assistance is available from JUTA UK.

HANDLING

Roll weights can be between 50kg and 100kg and hence appropriate equipment is required for unloading and handling.


STORAGE

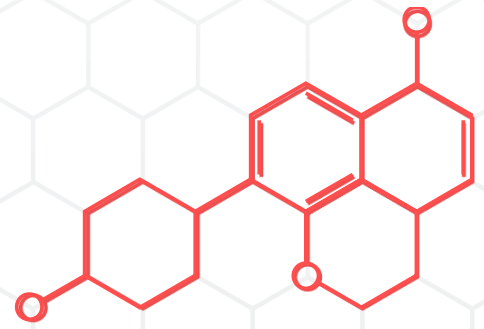
Void Vent is supplied in packaging designed to protect the product from damage during handling and storage, and degradation as a result of UV exposure. Void Vent should be kept in the supplied packaging until such time as it is required for installation.

ADDITIONAL INFORMATION

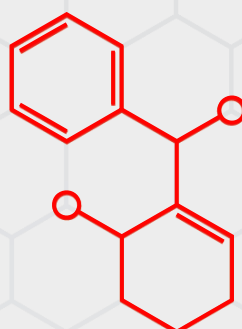
For additional information or assistance, please contact JUTA UK directly.

ACCESSORY PRODUCTS

-  JUTA GP® VENT BOX (GROUND LEVEL)
-  JUTA GP® AIR BRICKS



Contact us to find out more information.
info@juta.co.uk | 01772 754177 | JUTA.CO.UK
Melton Grove Works, Church Road, Lytham, FY8 5PL



JUTA



riba
product
selector