

GP[®] LIQUID GAS BARRIER

Rev: June 2019



Ground Gas Protection



JUTA GP[®] - **LIQUID GAS BARRIER** is a ready for use specialist styrene butadiene latex based liquid applied membrane. It offers a simple, continuous passive gas prevention barrier against the ingress of Methane, Carbon Dioxide, Radon, Ground Gas, VOC, air & Moisture into buildings. **LIQUID GAS BARRIER** also acts as a waterproofing membrane complying with the requirement C2 and C4 schedule 1 of the Building Regulations 1991 for England and Wales and BS8102:2009 (Type A waterproofing membrane).

JUTA GP - **LIQUID GAS BARRIER** complies with the latest codes of practice as published by BR211, CIRIA and BSI (BS 8485:2015). Suitable for use as gas protection for NHBC **GREEN**, **AMBER 1**, and **AMBER 2** site characterisations.

JUTA GP - LIQUID GAS BARRIER			
Characteristic	Test Method	Unit	LIQUID GAS BARRIER
Physical Properties			
APPLIED Thickness		mm	>1.0
Form Supplied			Viscous Liquid
Pack Size			5kg/15kg
Colour			RED
Chemical composition			Advanced SBS with specialty additives
Hydraulic Properties			
Water tightness	EN 1296, EN 1367, EN 1928	-	PASS
Gas Permeability			
Methane Permeability	BS EN ISO 15105 - 1	ml/m ² /day/atm	<40 (PASS)
Radon Permeability	Saarland University, GER	mm	>1.0mm applied thickness provides a complete barrier to Radon

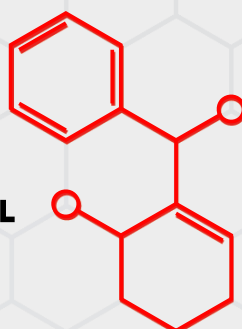
PROPERTIES

Juta GP - LIQUID GAS BARRIER can be used to protect most building surfaces from the effect of liquid and water vapour, carbonation and as a gas barrier to prevent the ingress of Methane, Carbon Dioxide and Radon. As the product is a barrier to moisture it can be used as a DPM on floors and walls.

COVERAGE

JUTA GP - LIQUID GAS BARRIER may be applied by brush, roller or airless spray. A minimum dry coated thickness of 1.0mm is needed to provide a gas barrier. To achieve 1.0mm thickness, a total of 2kg/m² is required, therefore a 15kg tub will cover an area of 7.5m², and a 5kg tub will cover an area of 2.5m²

Contact us to find out more information.
info@juta.co.uk | 01772 754177 | JUTA.CO.UK
 Melton Grove Works, Church Road, Lytham, FY8 5PL



JUTA



riba
product
selector

Additional Information

APPLICATION

The background surface should be smooth or have a light even texture, and masonry should be flush pointed and defects in the surfaces made good prior to application. The surface should be clean, sound and free of dust, loose material or free surface water. The LIQUID GAS BARRIER should not be applied in wet conditions or where inclement weather is expected before the membrane has dried. The membrane should not be applied in temperatures below 7°C.

Where multiple coats are applied, it is recommended that the coats are applied at right angles to each other. Before application of secondary coats it is necessary to let the first coat become touch dry.

The time required to reach touch dry condition will vary dependant on site conditions within the working area, but will typically be in the order of 1-2 hours in favourable conditions. It is preferable that secondary coats are applied within 24 hours.

For HYDROSTATIC applications - the use of JUTA CRYSTALLINE ACTIVE BARRIER (CAB) should be used prior to the application of Liquid Gas Barrier.

HANDLING

Material is supplied in tubs of 5kg or 15kg weight. Appropriate care must be taken with handling. Clean tools with water immediately after use.

STORAGE

Store tub in conditions between 5°C and 30°C; Shelf life 12 months unopened.

JOINTING/ SEALING/COMPATABILITY

Juta GP® - **LIQUID GAS BARRIER** is compatible with loose laid membranes supplied by JUTA UK, such as JUTA GP® 1, GP® 2, GP® H, GP® TITANTECH membranes.

ADDITIONAL INFORMATION

For additional information or assistance, please contact JUTA UK directly.

