

GP[®] PRIMER

Rev: June 2019



Ground Gas Protection

JUTA GP[®] (quick drying) PRIMER is a cold applied bituminous solution designed to penetrate and seal porous surfaces prior to the application of covering materials. Conforms to BS Code of Practice 144, Part 3.

Uses

GP[®] Primer seals porous substrates and encourages the adhesion of bituminous waterproofing systems and sheet coverings. It may be applied successfully to a wide range of surfaces:

- CONCRETE
- METALS (mild steel, Zinc, Lead)
- ASBESTOS CEMENT
- LIGHTWEIGHT CONCRETE SCREEDS
- SLATE

GP[®] PRIMER is available in 5 Litre and 25 litre containers.



GP [®] PRIMER	
Colour	Black
Coverage	
Metal Surfaces	6 - 11 m ² per litre
Concrete	3 - 4 m ² per litre
Bituminous	5 - 8 m ² per litre
Drying time	Allow to dry completely before subsequent installation begins. Drying time is dependent on ambient air temperature, atmospheric conditions and porosity of the substrate. Average drying time at 20°C is between 2 - 6 hours.

APPLICATION

Apply by brush or spray

Surfaces should be clean, ie. Free from all oil, grease, dirt, dust and loose debris. On metal surfaces all loose rust should be removed using a wire bristled brush and where advanced signs of corrosion are evident these areas should initially be treated with a rust inhibitor. Surfaces should preferably be dry although GP[®] PRIMER will adhere to damp but not wet surfaces. GP[®] PRIMER should be applied evenly across the surface in one generous coating.

STORAGE

Storage life indefinite in tightly sealed, undamaged containers.

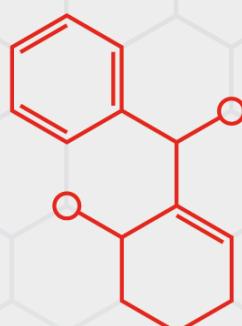
HEALTH AND SAFETY

Refer to Material Safety Data Sheet (MSDS) for a full list of hazards.

ADDITIONAL INFORMATION

For additional information or assistance, please contact JUTA UK directly.

Contact us to find out more information.
info@juta.co.uk | 01772 754177 | JUTA.CO.UK
Melton Grove Works, Church Road, Lytham, FY8 5PL



JUTA
riba
product
selector

